

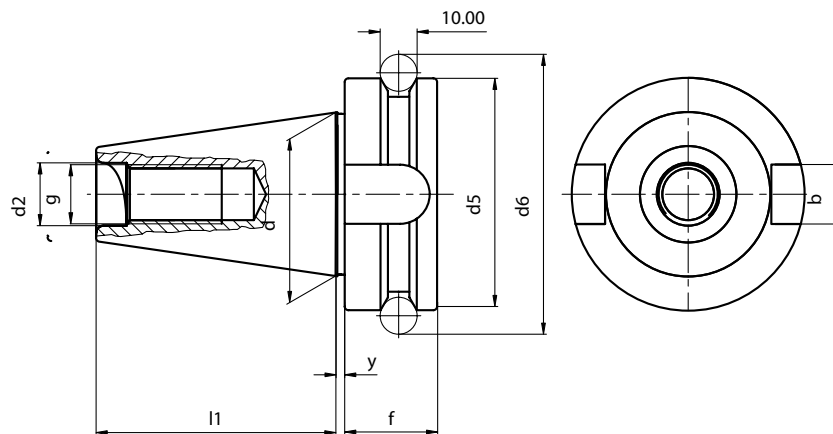


MAS 403 / BT A

MAS 403 / BT AD/ B

TECHNISCHE DATEN DER STEILKEGELWERKZEUGE
TAPER SHANKS DATA SHEET
DONNES TECHNIQUES QUEUE D'OUTILS
DATI TECNICI CONI D'ATTACCO

MAS 403/BT A

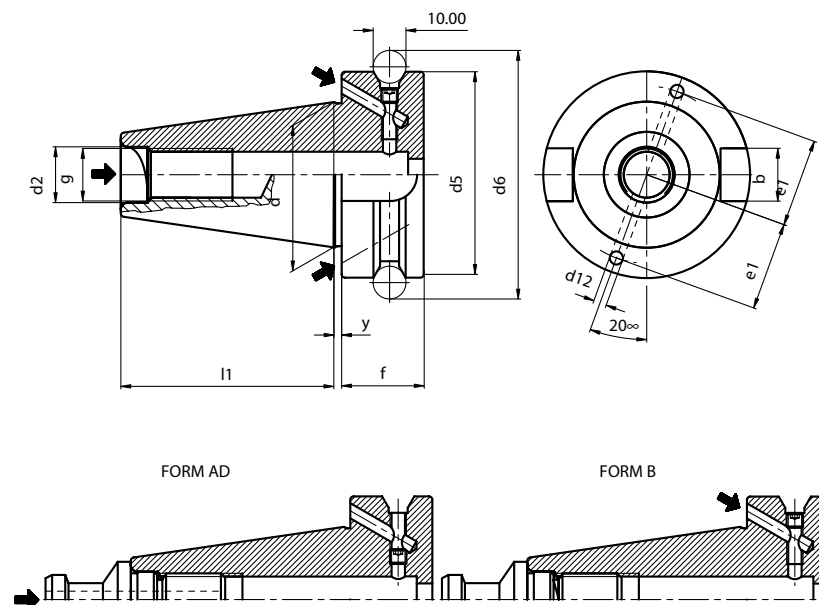


BT	d	l1	d2	g	y	d5	f	d6	b
30	31,75	48,4	13	M12	2	46	20	56,144	16,1
40	44,45	65,4	17	M16	2	63	25	75,68	16,1
50	69,85	101,8	25	M24	3	100	35	110,02	25,7

For coolant through the center of the toolholders with hollow retention knobs.
 Il lubrificante passa dal centro del mandrino attraverso il tirante forato.

TECHNISCHE DATEN DER STEILKEGELWERKZEUGE
TAPER SHANKS DATA SHEET
DONNES TECHNIQUES QUEUE D'OUTILS
DATI TECNICI CONI D'ATTACCO

MAS 403 /BT AD/B



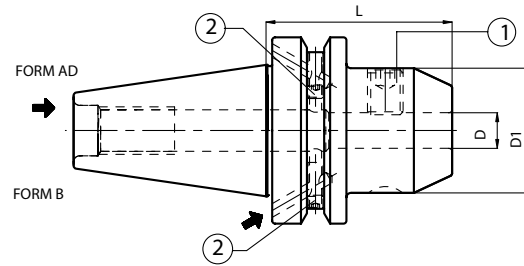
BT	d	l1	d2	g	y	d5	f	d6	d12	e1	b
40	44,45	65,4	17	M16	2	63	25	75,68	4	27	16,1
50	69,85	101,8	25	M24	3	100	35	110,02	5	42	25,7

For coolant through V-flange bores (B) or center of toolholders (AD). For central coolant, the V-flange channels are closed by socket screws.

Il lubrificante passa dai fori sulla flangia (B) oppure, chiudendo i fori con le apposite viti, dal centro del mandrino (AD).


ZYLINDERSCHAFTAUFNAHME WELDON
 END MILL HOLDERS WELDON
 MANDRINS POUR OUTIL TYPE WELDON
 MANDRINI PORTAFRESE TIPO WELDON

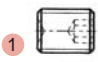
DIN 1835 B



Code N.	Description	ISO	D	L	D1
*263-11501	BT30H50WE06	30	6	50	25
*263-11502	BT30H50WE08	30	8	50	28
*263-11503	BT30H50WE10	30	10	50	35
*263-11504	BT30H55WE12	30	12	55	42
*263-11505	BT30H63WE16	30	16	63	48
*263-11506	BT30H70WE20	30	20	70	52
213-11413	BT40H50WE06 AD+B	40	6	50	25
213-11414	BT40H50WE08 AD+B	40	8	50	28
213-11415	BT40H63WE10 AD+B	40	10	63	35
213-11416	BT40H63WE12 AD+B	40	12	63	42
213-11417	BT40H63WE14 AD+B	40	14	63	44
213-11418	BT40H63WE16 AD+B	40	16	63	48
213-11419	BT40H63WE18 AD+B	40	18	63	50
213-11420	BT40H63WE20 AD+B	40	20	63	52
213-11421	BT40H90WE25 AD+B	40	25	90	65
213-11422	BT40H100WE32 AD+B	40	32	100	72
213-11465	BT40H105WE40 AD+B	40	40	105	80
213-11423	BT50H63WE06 AD+B	50	6	63	25
213-11424	BT50H63WE08 AD+B	50	8	63	28
213-11425	BT50H70WE10 AD+B	50	10	70	35
213-11426	BT50H80WE12 AD+B	50	12	80	42
213-11427	BT50H80WE14 AD+B	50	14	80	44
213-11428	BT50H80WE16 AD+B	50	16	80	48
213-11429	BT50H80WE18 AD+B	50	18	80	50
213-11430	BT50H80WE20 AD+B	50	20	80	52
213-11431	BT50H100WE25 AD+B	50	25	100	65
213-11432	BT50H105WE32 AD+B	50	32	105	72
213-11433	BT50H120WE40 AD+B	50	40	120	80
263-11425	BT50H125WE50 AD+B	50	50	125	100

Ersatzteile / Spare parts / Pieces detachees / Componenti

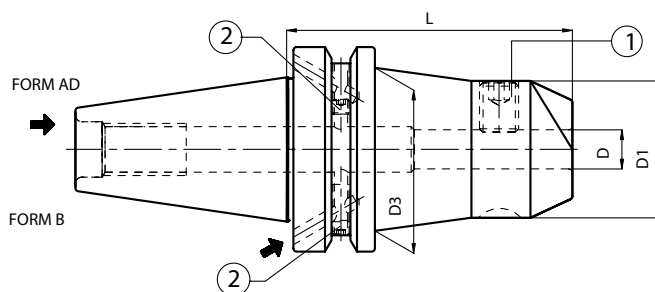
Tape	Screw	Quantity
		
ISO 40	811-103009	2
ISO 50	811-103009	2

D	Locking screw	Quantity
		
6	811-106001	1
8	811-106002	1
10	811-106004	1
12,14	811-106005	1
16,18	811-106006	1
20	811-106007	1
25	811-106008	2
32	811-106009	2
40	811-106009	2
50	811-106011	2

*Ausführung Form AD
 *Execution form AD
 *Forme AD
 *Forma AD

ZYLINDERSCHAFTAUFNAHME WELDON-LANG
 END MILL HOLDERS WELDON-LONG PROJECTION TYPE
 MANDRINS POUR OUTIL TYPE WELDON-SERIE LONGUE
 MANDRINI PORTAFRESE TIPO WELDON-SERIE LUNGA

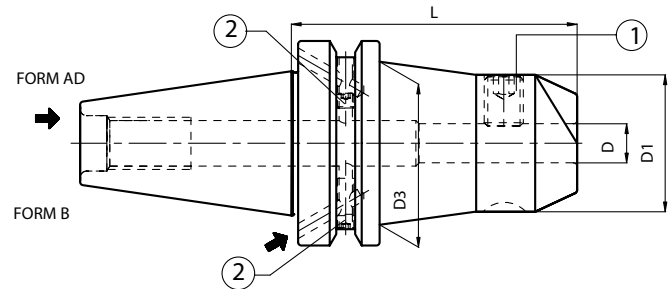
ISO 1835 B



	Code N.	Description	ISO	D	L	D1	D3
H100	213-11434	BT40H100WE06 AD+B	40	6	100	25	35
	213-11435	BT40H100WE08 AD+B	40	8	100	28	38
	213-11436	BT40H100WE10 AD+B	40	10	100	35	40
	213-11437	BT40H100WE12 AD+B	40	12	100	42	-
	213-11438	BT40H100WE14 AD+B	40	14	100	44	-
	213-11439	BT40H100WE16 AD+B	40	16	100	48	-
	213-11440	BT40H100WE18 AD+B	40	18	100	50	-
	213-11441	BT40H100WE20 AD+B	40	20	100	52	-
	213-11448	BT50H100WE06 AD+B	50	6	100	25	35
	213-11449	BT50H100WE08 AD+B	50	8	100	28	38
	213-11450	BT50H100WE10 AD+B	50	10	100	35	42
	213-11451	BT50H100WE12 AD+B	50	12	100	42	48
	213-11452	BT50H100WE14 AD+B	50	14	100	44	50
	213-11453	BT50H100WE16 AD+B	50	16	100	48	54
	213-11454	BT50H100WE18 AD+B	50	18	100	50	62
213-11455	BT50H100WE20 AD+B	50	20	100	52	66	
H160	213-11442	BT40H160WE06 AD+B	40	6	160	25	35
	213-11443	BT40H160WE08 AD+B	40	8	160	28	38
	213-11444	BT40H160WE10 AD+B	40	10	160	35	40
	213-11445	BT40H160WE12 AD+B	40	12	160	42	-
	213-11466	BT40H160WE14 AD+B	40	14	160	44	-
	213-11446	BT40H160WE16 AD+B	40	16	160	48	-
	213-11467	BT40H160WE18 AD+B	40	18	160	50	-
	213-11447	BT40H160WE20 AD+B	40	20	160	52	-
	213-11468	BT40H160WE25 AD+B	40	25	160	65	-
	213-11469	BT40H160WE32 AD+B	40	32	160	72	-
	213-11457	BT50H160WE06 AD+B	50	6	160	25	42
	213-11458	BT50H160WE08 AD+B	50	8	160	28	45
	213-11459	BT50H160WE10 AD+B	50	10	160	35	49
	213-11460	BT50H160WE12 AD+B	50	12	160	42	55
	213-11470	BT50H160WE14 AD+B	50	14	160	44	57
	213-11461	BT50H160WE16 AD+B	50	16	160	48	60
	213-11471	BT50H160WE18 AD+B	50	18	160	50	63
	213-11462	BT50H160WE20 AD+B	50	20	160	52	69
213-11472	BT50H160WE25 AD+B	50	25	160	65	72	
213-11473	BT50H160WE32 AD+B	50	32	160	72	-	


ZYLINDERSCHAFTAUFNAHME WELDON-LANG
 END MILL HOLDERS WELDON-LONG PROJECTION TYPE
 MANDRINS POUR OUTIL TYPE WELDON-SERIE LONGUE
 MANDRINI PORTAFRESE TIPO WELDON-SERIE LUNGA

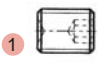
DIN 1835 B



Code N.	Description	ISO	D	L	D1	D3
213-11474	BT40H200WE06 AD+B	40	6	200	25	38
213-11475	BT40H200WE08 AD+B	40	8	200	28	41
213-11476	BT40H200WE10 AD+B	40	10	200	35	43
213-11477	BT40H200WE12 AD+B	40	12	200	42	48
213-11478	BT40H200WE14 AD+B	40	14	200	44	48
213-11479	BT40H200WE16 AD+B	40	16	200	48	-
213-11480	BT40H200WE18 AD+B	40	18	200	50	-
213-11481	BT40H200WE20 AD+B	40	20	200	52	-
213-11482	BT40H200WE25 AD+B	40	25	200	65	-
213-11483	BT40H200WE32 AD+B	40	32	200	72	-
213-11484	BT50H200WE06 AD+B	50	6	200	25	42
213-11485	BT50H200WE08 AD+B	50	8	200	28	45
213-11486	BT50H200WE10 AD+B	50	10	200	35	49
213-11487	BT50H200WE12 AD+B	50	12	200	42	55
213-11488	BT50H200WE14 AD+B	50	14	200	44	57
213-11489	BT50H200WE16 AD+B	50	16	200	48	60
213-11490	BT50H200WE18 AD+B	50	18	200	50	63
213-11491	BT50H200WE20 AD+B	50	20	200	52	69
213-11492	BT50H200WE25 AD+B	50	25	200	65	72
213-11463	BT50H200WE32 AD+B	50	32	200	72	-

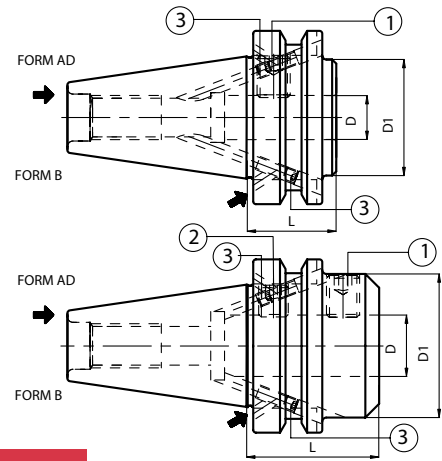
Ersatzteile / Spare parts / Pieces detachees / Componenti

Type	Screw	Quantity
		
ISO 40	811-103009	2
ISO 50	811-103009	2

D	Locking screw	Quantity
		
6	811-106001	1
8	811-106002	1
10	811-106004	1
12,14	811-106005	1
16,18	811-106006	1
20	811-106007	1
25	811-106008	2
32	811-106009	2


KURZE ZYLINDERSCHAFTAUFNAHME WELDON
SHORT END MILL WELDON HOLDERS
MANDRINS COURTS PORTE-FRAISE TYPE WELDON
MANDRINI CORTI PORTAFRESE TIPO WELDON

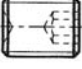
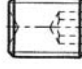
DIN 1835 B



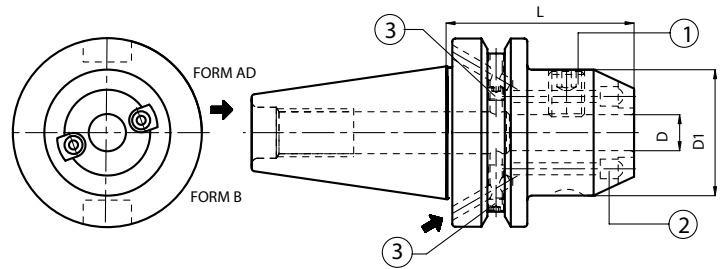
Code N.	Description	ISO	D	L	D1
213-11493	BT40H35WE16 AD+B	40	16	35	44
213-11494	BT40H35WE20 AD+B	40	20	35	44
213-11495	BT40H35WE25 AD+B	40	25	35	44
213-11496	BT40H60WE25 AD+B	40	25	60	49
213-11497	BT40H70WE32 AD+B	40	32	70	72
213-11498	BT50H44WE16 AD+B	50	16	44	70
213-11499	BT50H44WE20 AD+B	50	20	44	70
263-11401	BT50H44WE25 AD+B	50	25	44	70
263-11402	BT50H44WE32 AD+B	50	32	44	80

Ersatzteile / Spare parts / Pieces detachees / Componenti

Type	Screw	Quantity
		
ISO 40	811-103009	2
ISO 50	811-103009	2


Code N.	Locking screw	Quantity	Locking screw	Quantity
				
213-11493	811-106006	1	-	
213-11494	811-106027	1	-	
213-11495	811-106027	1	-	
213-11496	811-106014	1	811-106027	1
213-11497	811-106009	1	811-106046	1
213-11498	811-106006	1	-	
213-11499	811-106007	1	-	
263-11401	811-106008	1	-	
263-11402	811-106009	1	-	

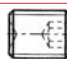

ZYLINDERSCHAFTAUFNAHME WELDON MIT SPRITZDÜSE
END MILL HOLDERS WELDON WITH COOLANT NOOSE FRONT FACE
MANDRINS POUR OUTIL TYPE WELDON AVEC BUSE D'ARROSAGE
MANDRINI PORTAFRESE TIPO WELDON CON SFERE DI LUBRIFICAZIONE **DIN 1835 B**



Code N.	Description	ISO	D	L	D1
263-11403	BT40H50WE06-CNFF AD+B	40	6	50	25
263-11404	BT40H50WE08-CNFF AD+B	40	8	50	28
263-11405	BT40H63WE10-CNFF AD+B	40	10	63	35
263-11406	BT40H63WE12-CNFF AD+B	40	12	63	42
263-11407	BT40H63WE14-CNFF AD+B	40	14	63	44
263-11408	BT40H63WE16-CNFF AD+B	40	16	63	48
263-11409	BT40H63WE18-CNFF AD+B	40	18	63	50
263-11410	BT40H63WE20-CNFF AD+B	40	20	63	52
263-11411	BT40H90WE25-CNFF AD+B	40	25	90	65
263-11412	BT40H100WE32-CNFF AD+B	40	32	100	72
263-11413	BT40H105WE40-CNFF AD+B	40	40	105	80
263-11414	BT50H63WE06-CNFF AD+B	50	6	63	25
263-11415	BT50H63WE08-CNFF AD+B	50	8	63	28
263-11416	BT50H70WE10-CNFF AD+B	50	10	70	35
263-11417	BT50H80WE12-CNFF AD+B	50	12	80	42
263-11418	BT50H80WE14-CNFF AD+B	50	14	80	44
263-11419	BT50H80WE16-CNFF AD+B	50	16	80	48
263-11420	BT50H80WE18-CNFF AD+B	50	18	80	50
263-11421	BT50H80WE20-CNFF AD+B	50	20	80	52
263-11422	BT50H100WE25-CNFF AD+B	50	25	100	65
263-11423	BT50H105WE32-CNFF AD+B	50	32	105	72
263-11424	BT50H120WE40-CNFF AD+B	50	40	120	80

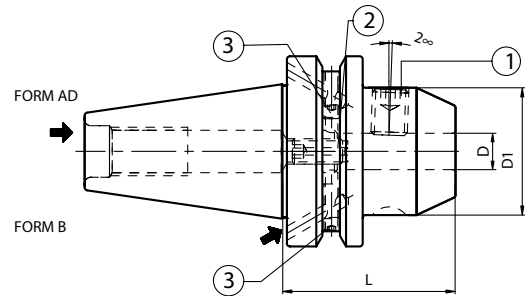
Ersatzteile / Spare parts / Pieces detachees / Componenti

Tape	Screw	Quantity
		
ISO 40	811-103009	2
ISO 50	811-103009	2

D	Locking screw	Quantity	Coolant noose
			
6	811-106001	1	PWZ1005D6x4.5
8	811-106002	1	PWZ1005D6x4.5
10	811-106004	1	PWZ1005D6x4.5
12,14	811-106005	1	PWZ1005D6x4.5
16,18	811-106006	1	PWZ1008D10x7
20	811-106007	1	PWZ1008D10x7
25	811-106008	2	PWZ1012D12x8
32	811-106009	2	PWZ1012D12x8
40	811-106009	2	PWZ1012D12x8


ZYLINDERSCHAFTAUFNAHME WHISTLE NOTCH
 END MILL HOLDERS WHISTLE NOTCH
 MANDRINS POUR OUTIL TYPE WHISTLE NOTCH
 MANDRINI PORTAFRESE TIPO WHISTLE NOTCH


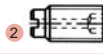
DIN 1835 E



Code N.	Description	ISO	D	L	D1
213-31412	BT40H50WN06 AD+B	40	6	50	25
213-31413	BT40H50WN08 AD+B	40	8	50	28
213-31414	BT40H63WN10 AD+B	40	10	63	35
213-31415	BT40H63WN12 AD+B	40	12	63	42
213-31416	BT40H63WN14 AD+B	40	14	63	44
213-31417	BT40H63WN16 AD+B	40	16	63	48
213-31418	BT40H63WN18 AD+B	40	18	63	50
213-31419	BT40H63WN20 AD+B	40	20	63	52
213-31420	BT40H90WN25 AD+B	40	25	90	65
213-31421	BT40H100WN32 AD+B	40	32	100	72
213-31422	BT40H105WN40 AD+B	40	40	105	80
213-31423	BT50H63WN06 AD+B	50	6	63	25
213-31424	BT50H63WN08 AD+B	50	8	63	28
213-31425	BT50H70WN10 AD+B	50	10	70	35
213-31426	BT50H80WN12 AD+B	50	12	80	42
213-31427	BT50H80WN14 AD+B	50	14	80	44
213-31428	BT50H80WN16 AD+B	50	16	80	48
213-31429	BT50H80WN18 AD+B	50	18	80	50
213-31430	BT50H80WN20 AD+B	50	20	80	52
213-31431	BT50H100WN25 AD+B	50	25	100	65
213-31432	BT50H105WN32 AD+B	50	32	105	72
213-31433	BT50H120WN40 AD+B	50	40	120	80

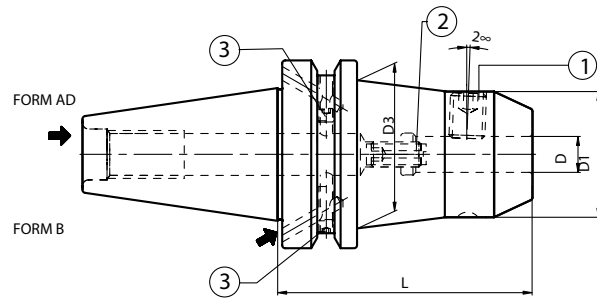
Ersatzteile / Spare parts / Pieces detachees / Componenti

Tape	Screw	Quantity
		
ISO 40	811-103009	2
ISO 50	811-103009	2

D	Locking screw	Quantity	Stop screw	Quantity
				
6	811-106001	1	811-303043	1
8	811-106002	1	811-303081	1
10	811-106004	1	811-303082	1
12,14	811-106005	1	811-303083	1
16,18	811-106006	1	811-303084	1
20	811-106007	1	811-303084	1
25	811-106008	2	811-303085	1
32	811-106009	2	811-303085	1
40	811-106009	2	811-303085	1

ZYLINDERSCHAFTAUFNAHME WHISTLE NOTCH -LANG
 END MILL HOLDERS WHISTLE NOTCH -LONG PROJECTION TYPE
 MANDRINS POUR OUTIL TYPE WHISTLE NOTCH -SERIE LONGUE
 MANDRINI PORTAFRESE TIPO WHISTLE NOTCH -SERIE LUNGA

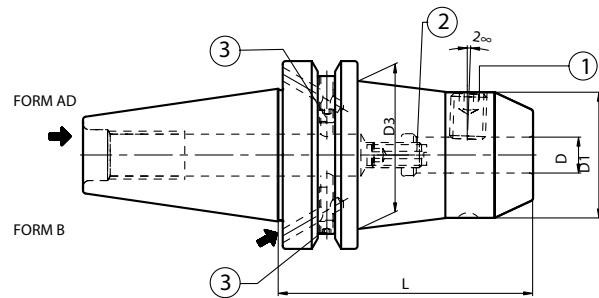
DIN 1835 E



	Code N.	Description	ISO	D	L	D1	D3
H100	213-31434	BT40H100WN06 AD+B	40	6	100	25	35
	213-31435	BT40H100WN08 AD+B	40	8	100	28	38
	213-31436	BT40H100WN10 AD+B	40	10	100	35	40
	213-31437	BT40H100WN12 AD+B	40	12	100	42	-
	213-31438	BT40H100WN14 AD+B	40	14	100	44	-
	213-31439	BT40H100WN16 AD+B	40	16	100	48	-
	213-31440	BT40H100WN18 AD+B	40	18	100	50	-
	213-31441	BT40H100WN20 AD+B	40	20	100	52	-
	213-31442	BT50H100WN06 AD+B	50	6	100	25	35
	213-31443	BT50H100WN08 AD+B	50	8	100	28	38
	213-31444	BT50H100WN10 AD+B	50	10	100	35	42
	213-31445	BT50H100WN12 AD+B	50	12	100	42	48
	213-31446	BT50H100WN14 AD+B	50	14	100	44	50
	213-31447	BT50H100WN16 AD+B	50	16	100	48	54
	213-31448	BT50H100WN18 AD+B	50	18	100	50	62
213-31449	BT50H100WN20 AD+B	50	20	100	52	66	
H160	213-31450	BT40H160WN06 AD+B	40	6	160	25	35
	213-31451	BT40H160WN08 AD+B	40	8	160	28	38
	213-31452	BT40H160WN10 AD+B	40	10	160	35	40
	213-31453	BT40H160WN12 AD+B	40	12	160	42	-
	213-31454	BT40H160WN14 AD+B	40	14	160	44	-
	213-31455	BT40H160WN16 AD+B	40	16	160	48	-
	213-31456	BT40H160WN18 AD+B	40	18	160	50	-
	213-31457	BT40H160WN20 AD+B	40	20	160	52	-
	213-31458	BT40H160WN25 AD+B	40	25	160	65	-
	213-31459	BT40H160WN32 AD+B	40	32	160	72	-
	213-31460	BT50H160WN06 AD+B	50	6	160	25	42
	213-31461	BT50H160WN08 AD+B	50	8	160	28	45
	213-31462	BT50H160WN10 AD+B	50	10	160	35	49
	213-31463	BT50H160WN12 AD+B	50	12	160	42	55
	213-31464	BT50H160WN14 AD+B	50	14	160	44	57
	213-31465	BT50H160WN16 AD+B	50	16	160	48	60
	213-31466	BT50H160WN18 AD+B	50	18	160	50	63
	213-31467	BT50H160WN20 AD+B	50	20	160	52	69
	213-31468	BT50H160WN25 AD+B	50	25	160	65	72
	213-31469	BT50H160WN32 AD+B	50	32	160	72	-


ZYLINDERSCHAFTAUFNAHME WHISTLE NOTCH -LANG
 END MILL HOLDERS WHISTLE NOTCH -LONG PROJECTION TYPE
 MANDRINS POUR OUTIL TYPE WHISTLE NOTCH -SERIE LONGUE
 MANDRINI PORTAFRESE TIPO WHISTLE NOTCH -SERIE LUNGA


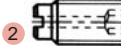
DIN 1835



Code N.	Description	ISO	D	L	D1	D3
213-31470	BT40H200WN06 AD+B	40	6	200	25	38
213-31471	BT40H200WN08 AD+B	40	8	200	28	41
213-31472	BT40H200WN10 AD+B	40	10	200	35	43
213-31473	BT40H200WN12 AD+B	40	12	200	42	48
213-31474	BT40H200WN14 AD+B	40	14	200	44	48
213-31475	BT40H200WN16 AD+B	40	16	200	48	-
213-31476	BT40H200WN18 AD+B	40	18	200	50	-
213-31477	BT40H200WN20 AD+B	40	20	200	52	-
213-31478	BT40H200WN25 AD+B	40	25	200	65	-
213-31479	BT40H200WN32 AD+B	40	32	200	72	-
213-31480	BT50H200WN06 AD+B	50	6	200	25	42
213-31481	BT50H200WN08 AD+B	50	8	200	28	45
213-31482	BT50H200WN10 AD+B	50	10	200	35	49
213-31483	BT50H200WN12 AD+B	50	12	200	42	55
213-31484	BT50H200WN14 AD+B	50	14	200	44	57
213-31485	BT50H200WN16 AD+B	50	16	200	48	60
213-31486	BT50H200WN18 AD+B	50	18	200	50	63
213-31487	BT50H200WN20 AD+B	50	20	200	52	69
213-31488	BT50H200WN25 AD+B	50	25	200	65	72
213-31489	BT50H200WN32 AD+B	50	32	200	72	-

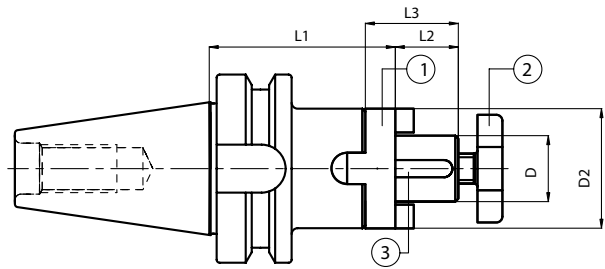
Ersatzteile / Spare parts / Pieces detachees / Componenti

Tape	Screw	Quantity
		
ISO 40	811-103009	2
ISO 50	811-103009	2

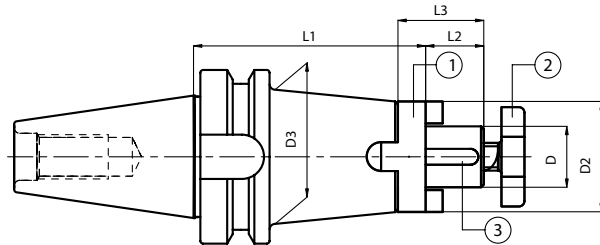
D	Locking screw	Quantity	Stop screw	Quantity
				
6	811-106001	1	811-303043	1
8	811-106002	1	811-303081	1
10	811-106004	1	811-303082	1
12,14	811-106005	1	811-303083	1
16,18	811-106006	1	811-303084	1
20	811-106007	1	811-303084	1
25	811-106008	2	811-303085	1
32	811-106009	2	811-303085	1

**KOMBI AUFSTECKFRÄSDORNE
COMBI-SHELL MILL ADAPTORS
MANDRINS PORTE-FRAISES A DOUBLE USAGE
MANDRINI PORTAFRESE COMBINATI**

DIN 6358



	Code N.	Description	ISO	D	L1	L2	L3	D2
STANDARD	216-11527	BT30H50D16C	30	16	50	17	27	32
	216-11528	BT30H50D22C	30	22	50	19	31	40
	216-11529	BT30H55D27C	30	27	55	21	33	48
	216-11501	BT40H55D16C	40	16	55	17	27	32
	216-11502	BT40H55D22C	40	22	55	19	31	40
	216-11503	BT40H55D27C	40	27	55	21	33	48
	216-11504	BT40H60D32C	40	32	60	24	38	58
	216-11505	BT40H60D40C	40	40	60	27	41	70
	216-11507	BT50H70D16C	50	16	70	17	27	32
	216-11508	BT50H70D22C	50	22	70	19	31	40
	216-11509	BT50H70D27C	50	27	70	21	33	48
	216-11510	BT50H70D32C	50	32	70	24	38	58
	216-11511	BT50H70D40C	50	40	70	27	41	70



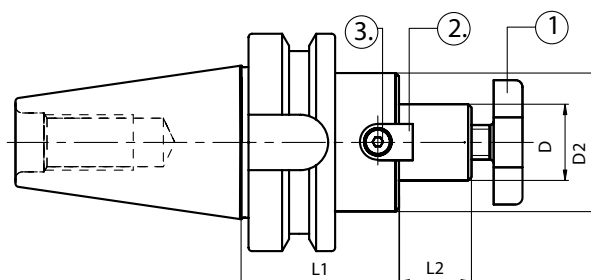
	Code N.	Description	ISO	D	L1	L2	L3	D2	D3
EXTENDED	216-11536	BT30H80D16C	30	16	80	17	27	32	-
	216-11537	BT30H80D22C	30	22	80	19	31	40	-
	216-11538	BT30H90D27C	30	27	90	21	33	48	-
	216-11517	BT40H90D16C	40	16	90	17	27	32	44
	216-11518	BT40H90D22C	40	22	90	19	31	40	-
	216-11519	BT40H90D27C	40	27	90	21	33	48	-
	216-11520	BT40H100D32C	40	32	100	24	38	58	-
	216-11521	BT40H100D40C	40	40	100	27	41	70	-
	216-11522	BT50H100D16C	50	16	100	17	27	32	44
	216-11523	BT50H100D22C	50	22	100	19	31	40	50
	216-11524	BT50H100D27C	50	27	100	21	33	48	60
	216-11525	BT50H100D32C	50	32	100	24	38	58	-
	216-11526	BT50H100D40C	50	40	100	27	41	70	-

Ersatzteile / Spare parts / Pieces detachees / Componenti

D	Ring	Screw	Key
16	814-30001	811-107003	814-201010
22	814-30002	811-107004	814-201020
27	814-30003	811-107005	814-201030
32	814-30004	811-107006	814-201040
40	814-30005	811-107007	814-201050

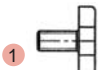

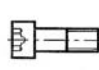
**AUFSTECKFRÄSDORNE FÜR FRÄSER MIT QUERNUT
FACE MILL HOLDERS-TENONS DRIVE
MANDRINS PORTE-FRAISE-ENTRAÎNEMENT PAR TENONS
MANDRINI PORTAFRESE A TRASCINAMENTO FISSO**

ISO 3937

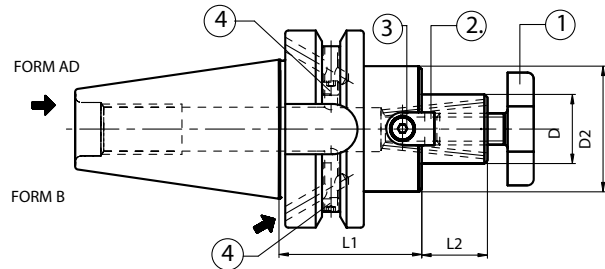


Code N.	Description	ISO	D	L1	L2	D2
216-71501	BT30H35D16F	30	16	35	17	38
216-71502	BT30H40D22F	30	22	40	19	48
216-71503	BT30H40D27F	30	27	40	21	58
216-71507	BT40H45D16F	40	16	45	17	38
216-71508	BT40H45D22F	40	22	45	19	48
216-71509	BT40H45D27F	40	27	45	21	58
216-71510	BT40H50D32F	40	32	50	24	78
216-71511	BT40H55D40F	40	40	55	27	88
216-71517	BT50H60D16F	50	16	60	17	38
216-71518	BT50H60D22F	50	22	60	19	48
216-71519	BT50H60D27F	50	27	60	21	58
216-71520	BT50H60D32F	50	32	60	24	78
216-71521	BT50H60D40F	50	40	60	27	88

Ersatzteile / Spare parts / Pieces detachees / Componenti


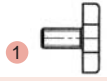

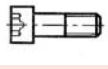
D	Screw	Tenon	Screw
			
16	811-107003	814-20228	811-101004
22	811-107004	814-20225	811-101011
27	811-107005	814-20227	811-101018
32	811-107006	814-20263	811-101029
40	811-107007	814-20271	811-101029

AUFSTECKFRÄSDORNE FÜR FRÄSER MIT QUERNUT MIT KÜHLMITTELZUFUHR
FACE MILL HOLDERS-TENONS DRIVE-WITH INTERNAL COOLANT SUPPLY
MANDRINS PORTE-FRAISE-ENTRAÎNEMENT PAR TENONS AVEC ARROSSAGE INTERNE
MANDRINI PORTAFRESE A TRASCINAMENTO FISSO CON PASSAGGIO REFRIGERANTE **ISO 3937**



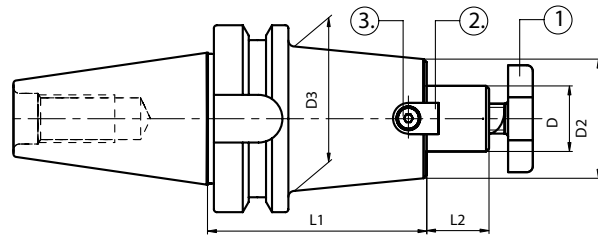
Code N.	Description	ISO	D	L1	L2	D2
216-71401	BT40H45D16F AD+B	40	16	45	17	38
216-71402	BT40H45D22F AD+B	40	22	45	19	48
216-71403	BT40H45D27F AD+B	40	27	45	21	58
216-71404	BT40H50D32F AD+B	40	32	50	24	78
216-71405	BT40H55D40F AD+B	40	40	55	27	88
216-71406	BT50H60D16F AD+B	50	16	60	17	38
216-71407	BT50H60D22F AD+B	50	22	60	19	48
216-71408	BT50H60D27F AD+B	50	27	60	21	58
216-71409	BT50H60D32F AD+B	50	32	60	24	78
216-71410	BT50H60D40F AD+B	50	40	60	27	88

Ersatzteile / Spare parts / Pieces detachees / Componenti

Tape	Screw	Quantity	D	Screw	Tenon	Screw
						
ISO 40	811-103009	2	16	811-107003	814-20228	811-101004
ISO 50	811-103009	2	22	811-107004	814-20225	811-101011
			27	811-107005	814-20227	811-101018
			32	811-107006	814-20263	811-101029
			40	811-107007	814-20271	811-101029

AUFSTECKFRÄSDORNE FÜR FRÄSER MIT QUERNUT-LANG
FACE MILL HOLDERS-TENONS DRIVE-LONG PROJECTION TYPE
MANDRINS PORTE-FRAISE-ENTRAÎNEMENT PAR TENONS-SERIE LONGUE
MANDRINI PORTAFRESE A TRASCINAMENTO FISSO-SERIE LUNGA

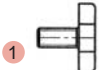

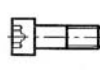
ISO 3937



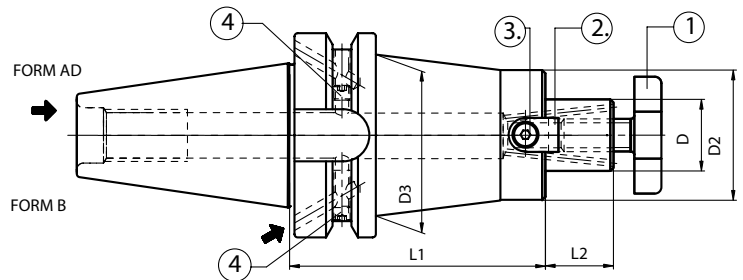
	Code N.	Description	ISO	D	L1	L2	D2	D3	
H100	216-71522	BT40H100D16F	40	16	100	17	39	-	
	216-71526	BT40H100D22F	40	22	100	19	46	48	A
	216-71530	BT40H100D22F	40	22	100	19	50	59	B
	216-71589	BT50H100D16F	50	16	100	17	39	-	
	216-71534	BT50H100D22F	50	22	100	19	46	49	A
	216-71539	BT50H100D22F	50	22	100	19	50	60	B
	216-71544	BT50H100D27F	50	27	100	21	55	78	C
	216-71590	BT50H100D32F	50	32	100	24	66	78	
H150	216-71523	BT40H150D16F	40	16	150	17	39	-	
	216-71527	BT40H150D22F	40	22	150	19	46	48	A
	216-71531	BT40H150D22F	40	22	150	19	50	59	B
	216-71591	BT50H150D16F	50	16	150	17	39	-	
	216-71535	BT50H150D22F	50	22	150	19	46	49	A
	216-71540	BT50H150D22F	50	22	150	19	50	60	B
	216-71545	BT50H150D27F	50	27	150	21	55	78	C
	216-71592	BT50H150D32F	50	32	150	24	66	78	
H200	216-71524	BT40H200D16F	40	16	200	17	39	-	
	216-71528	BT40H200D22F	40	22	200	19	46	48	A
	216-71532	BT40H200D22F	40	22	200	19	50	59	B
	216-71593	BT50H200D16F	50	16	200	17	39	-	
	216-71536	BT50H200D22F	50	22	200	19	46	49	A
	216-71541	BT50H200D22F	50	22	200	19	50	60	B
	216-71546	BT50H200D27F	50	27	200	21	55	78	C
	216-71594	BT50H200D32F	50	32	200	24	66	78	

A/Für Fräser D50/Suitable for milling cutters D50/ Adaptes pour fraises D50/ Adatti per frese D50
 B/Für Fräser D63/Suitable for milling cutters D63/ Adaptes pour fraises D63/ Adatti per frese D63
 C/Für Fräser D80/Suitable for milling cutters D80/ Adaptes pour fraises D80/ Adatti per frese D80

Ersatzteile / Spare parts / Pieces detachees / Componenti


D	Screw	Tenon	Screw
			
16	811-107003	814-20228	811-101004
22/46	811-107004	814-20225	811-101011
22/50	811-107004	814-20226	811-101012
27	811-107005	814-20227	811-101017
32	811-107006	814-20229	811-101029

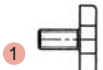

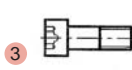
AUFSTECKFRÄSDORNE FÜR FRÄSER MIT QUERNUT MIT KÜHLMITTELZUFUHR-LANG
FACE MILL HOLDERS-TENONS DRIVE-WITH INTERNAL COOLANT SUPPLY-LONG
MANDRINS PORTE-FRAISE-ENTRAÎNEMENT PAR TENONS AVEC ARROSSAGE INTERNE-LONGUE
MANDRINI PORTAFRESE A TRASCINAMENTO FISSO CON PASSAGGIO REFRIGERANTE-LUNGA **ISO 3937**



Code N.	Description	ISO	D	L1	L2	D2	D3
216-71411	BT40H100D16F AD+B	40	16	100	17	32	40
216-71412	BT40H100D22F AD+B	40	22	100	19	40	48
216-71413	BT40H100D27F AD+B	40	27	100	21	48	-
216-71414	BT40H100D32F AD+B	40	32	100	24	58	-
216-71415	BT50H100D16F AD+B	50	16	100	17	32	40
216-71416	BT50H100D22F AD+B	50	22	100	19	40	52
216-71417	BT50H100D27F AD+B	50	27	100	21	48	55
216-71418	BT50H100D32F AD+B	50	32	100	24	58	65
216-71419	BT50H100D40F AD+B	50	40	100	27	70	-

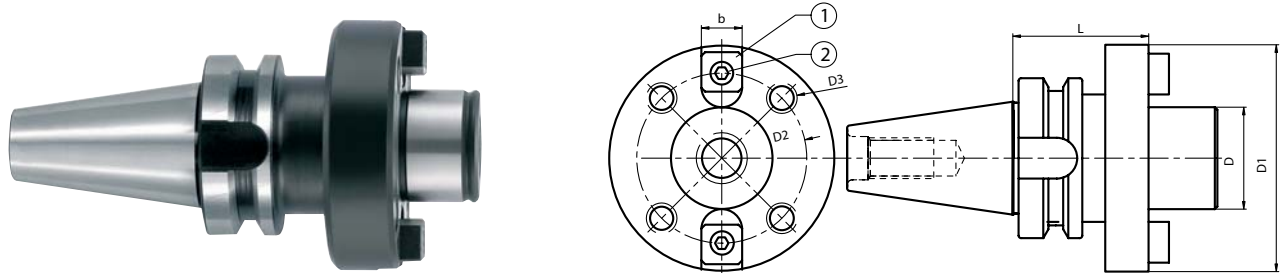
Ersatzteile / Spare parts / Pieces detachees / Componenti

Tappe	Screw	Quantity
		
ISO 40	811-103009	2
ISO 50	811-103009	2

D	Screw	Tenon	Screw
			
16	811-107003	814-20214	811-101003
22	811-107004	814-20215	811-101010
27	811-107005	814-20216	811-101017
32	811-107006	814-20217	811-101027
40	811-107007	814-20218	811-101028

AUFSTECKFRÄSERDORNE FÜR MESSERKÖPFE
FACE MILL HOLDER FOR FACE MILLING CUTTERS
MANDRINS PORTE-FRAISE POUR FRAISES A SURFACER
MANDRINI PORTAFRESE PER FRESE A SPIANARE

DIN 6357



Code N.	Description	ISO	D	L	D1	D2	D3	b
216-21501	BT40H60D40	40	40	60	89	66.7	M12	15.9
216-21502	BT50H70D40	50	40	70	89	66.7	M12	15.9
216-21503	BT50H80D60	50	60	80	129	101.6	M16	25.4

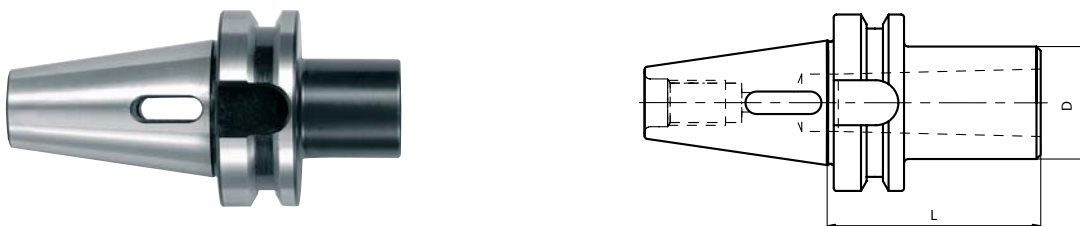
Ersatzteile / Spare parts / Pieces detachees / Componenti

D	Tenon	Screw
40	814-202080	811-101028
60	814-202120	811-101063

MAS 403/BT A

ZWISCHENHÜLSEN FÜR MORSEKEGEL MIT AUSTREIBBLAPPEN
MORSE TAPER ADAPTORS FOR DRILLS
DOUILLES POUR CONE MORSE A TENON
MANDRINI PORTAPUNTE ATTACCO CONO MORSE

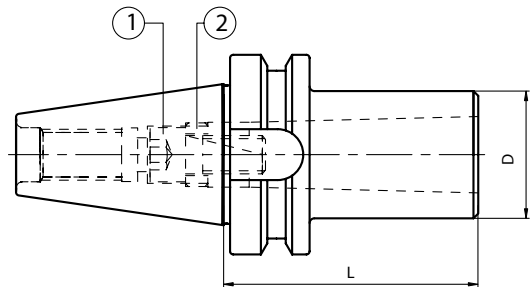
DIN 228-2 FORM D



Code N.	Description	ISO	MORSE	D	L
212-41512	BT30H50CM1P	30	1	25	50
212-41513	BT30H60CM2P	30	2	32	60
212-41518	BT30H79CM3P	30	3	40	79
212-41501	BT40H50CM1P	40	1	25	50
212-41502	BT40H50CM2P	40	2	32	50
212-41503	BT40H70CM3P	40	3	40	70
212-41504	BT40H95CM4P	40	4	48	95
212-41519	BT50H45CM1P	50	1	25	45
212-41505	BT50H60CM2P	50	2	32	60
212-41506	BT50H65CM3P	50	3	40	65
212-41507	BT50H70CM4P	50	4	48	70
212-41508	BT50H105CM5P	50	5	63	105

ZWISCHENHÜLSEN FÜR MORSEKEGEL MIT ANZUGSGEWINDE
MORSE TAPER ADAPTER WITH TREAD
DOUILLES POUR CONE MORSE AVEC TARAUDAGE
MANDRINI PORTAFRESE ATTACCO CONO MORSE

DIN 228-2 FORM C



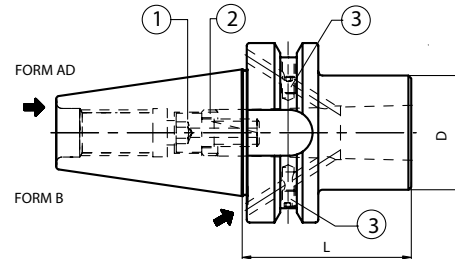
Code N.	Description	ISO	MORSE	D	L
212-21512	BT30H50CM1F	30	1	25	50
212-21513	BT30H60CM2F	30	2	32	60
212-21518	BT30H80CM3F	30	3	40	80
212-21501	BT40H50CM1F	40	1	25	50
212-21502	BT40H50CM2F	40	2	32	50
212-21503	BT40H70CM3F	40	3	40	70
212-21504	BT40H95CM4F	40	4	48	95
212-21519	BT50H45CM1F	50	1	25	45
212-21505	BT50H60CM2F	50	2	32	60
212-21506	BT50H65CM3F	50	3	40	65
212-21507	BT50H90CM4F	50	4	48	90
212-21508	BT50H118CM5F	50	5	63	118

Ersatzteile / Spare parts / Pieces detachees / Componenti

BT/MORSE	Screw (BTA)	Screw (BTAD/B)	Ring
30/1	811-111009	-	811-302037
30/2	811-111007	-	811-302031
30/3	811-111008	-	811-302032
40/1	811-101029	-	811-302030
40/2	811-111007	811-111038	811-302031
40/3	811-111008	811-401098	811-302032
40/4	811-111005	811-401083	811-302036
50/1	811-101031	-	811-302030
50/2	811-101054	811-401084	811-302032
50/3	811-101065	811-401085	811-302032
50/4	811-401037	811-401086	811-302036
50/5	811-101092	811-401087	811-302034


ZWISCHENHÜLSEN FÜR MORSEKEGEL MIT ANZUGSGEWINDE
MORSE TAPER ADAPTER WITH TREAD
DOUILLES POUR CONE MORSE AVEC TARAUDAGE
MANDRINI PORTAFRESE ATTACCO CONO MORSE

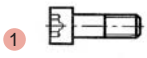
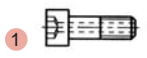

DIN 228-2 FORM C



Code N.	Description	ISO	MORSE	D	L
212-31405	BT40H50CM2F AD+B	40	2	32	50
212-31406	BT40H75CM3F AD+B	40	3	40	75
212-31407	BT40H95CM4F AD+B	40	4	48	95
212-31408	BT50H60CM2F AD+B	50	2	32	60
212-31409	BT50H65CM3F AD+B	50	3	40	65
212-31410	BT50H95CM4F AD+B	50	4	48	95
212-31411	BT50H120CM5F AD+B	50	5	63	120

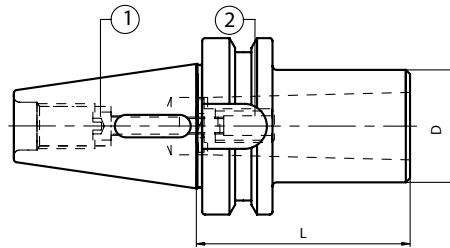
Ersatzteile / Spare parts / Pieces detachees / Componenti

Tape/Morse	Screw	Quantity
		
40/2	811-103009	2
40/3;4	811-103010	2
50/2;3;4	811-103009	2
50/5	811-103006	2

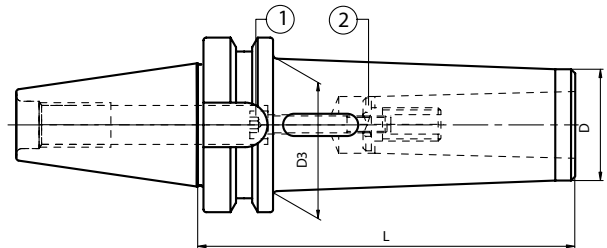
BT/MORSE	Screw (BTA)	Screw (BTAD/B)	Ring
			
30/1	811-111009	-	811-302037
30/2	811-111007	-	811-302031
30/3	811-111008	-	811-302032
40/1	811-101029	-	811-302030
40/2	811-111007	811-111038	811-302031
40/3	811-111008	811-401098	811-302032
40/4	811-111005	811-401083	811-302036
50/1	811-101031	-	811-302030
50/2	811-101054	811-401084	811-302032
50/3	811-101065	811-401085	811-302032
50/4	811-401037	811-401086	811-302036
50/5	811-101092	811-401087	811-302034

ZWISCHENHÜLSEN FÜR MORSEKEGEL MIT AUSTREIBBLAPPEN ODER ANZUGSGEWINDE
 MORSE TAPER ADAPTORS FOR DRILLS AND MILLS
 DOUILLES POUR CONE MORSE A TENON ET AVEC TARAUDAGE
 MANDRINI PORTAPUNTE-PORTAFRESE ATTACCO CONO MORSE

DIN 228-2 FORM C/D

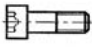





	Code N.	Description	ISO	MORSE	D	L
STANDARD	212-61512	BT30H52CM1P/F	30	1	25	52
	212-61513	BT30H63CM2P/F	30	2	32	63
	212-61514	BT30H90CM3P/F	30	3	40	90
	212-61518	BT40H50CM1P/F	40	1	25	50
	212-61519	BT40H60CM2P/F	40	2	32	60
	212-61520	BT40H76CM3P/F	40	3	40	76
	212-61522	BT50H45CM1P/F	50	1	25	45
	212-61523	BT50H60CM2P/F	50	2	32	60
	212-61524	BT50H65CM3P/F	50	3	40	65
	212-61525	BT50H95CM4P/F	50	4	48	95
	212-61526	BT50H120CM5P/F	50	5	63	120

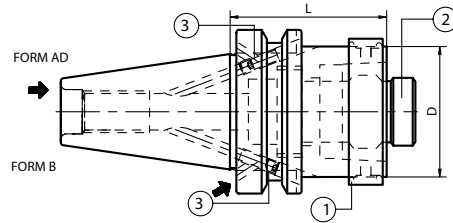


	Code N.	Description	ISO	MORSE	D	D3	L
EXTENDED	212-61527	BT30H110CM1P/F	30	1	18	25	110
	212-61528	BT30H120CM2P/F	30	2	25	32	120
	212-61529	BT30H140CM3P/F	30	3	33	40	140
	212-61501	BT40H115CM1P/F	40	1	18	25	115
	212-61502	BT40H125CM2P/F	40	2	25	32	125
	212-61503	BT40H140CM3P/F	40	3	33	40	140
	212-61505	BT50H120CM1P/F	50	1	18	25	120
	212-61506	BT50H140CM2P/F	50	2	25	32	140
	212-61507	BT50H150CM3P/F	50	3	33	40	150
	212-61508	BT50H180CM4P/F	50	4	40	48	180
	212-61509	BT50H220CM5P/F	50	5	55	63	220

Ersatzteile / Spare parts / Pieces detachees / Componenti

	Code N.	Screw	Ring		Code N.	Screw	Ring
STANDARD				EXTENDED			
	212-61512	811-111026	-		212-61527	811-101034	-
	212-61513	811-111026	811-302010		212-61528	811-101035	811-302010
	212-61514	811-101035	811-302006		212-61529	811-101037	811-302006
	212-61518	811-101033	-		212-61501	811-101037	-
	212-61519	811-401018	-		212-61502	811-101061	-
	212-61520	811-101034	811-302006		212-61503	811-101081	811-302006
	212-61522	811-101033	-		212-61505	811-101077	-
	212-61523	811-101057	-		212-61506	811-101078	-
	212-61524	811-101071	-		212-61507	811-101079	-
	212-61525	811-401016	-		212-61508	811-401030	-
	212-61526	811-101071	811-302008		212-61509	811-101080	811-302008

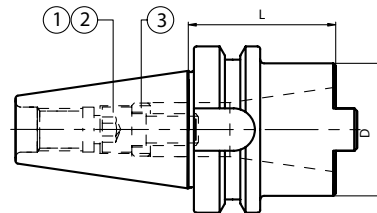
ZWISCHENHÜLSEN BT X HSK – HAND SPANNSYSTEM
TAPER ADAPTER BT X HSK – MANUAL CLAMPING
DOUILLES INTERMEDIAIRES BT X HSK – SERRAGE MANUEL
MANDRINI RIDUZIONE DA BT A HSK – CHIUSURA MANUALE



Code N.	Description	ISO	HSK	D	L	¹ Ring (complete)	² Locking unit (complete)
212-91401	BT40H60HSK50 AD+B	40	50	50	60	H50A-AN	H50A-UBL
212-91402	BT40H80HSK63 AD+B	40	63	63	80	H63A-AN	H63A-UBL
212-91403	BT50H60HSK50 AD+B	50	50	50	60	H50A-AN	H50A-UBL
212-91404	BT50H60HSK63 AD+B	50	63	63	60	H63A-AN	H63A-UBL

MAS 403/BT A

ZWISCHENHÜLSEN BT X SK
ISO TAPER ADAPTORS
DOUILLES INTERMEDIAIRES BT X SA
MANDRINI RIDUZIONE E PROLUNGE BT/ ISO



Code N.	Description	ISO	ISO	D	L
212-11504	BT40H63ISO30/TC30	40	30	52	63
212-11508	BT40H100ISO40/TC40	40	40	68	100
212-11507	BT50H70ISO40/TC40	50	40	78	70
212-11509	BT50H120ISO50/TC50	50	50	100	120

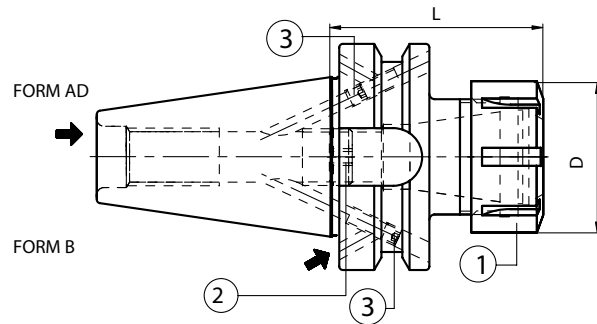
Ersatzteile / Spare parts / Pieces detachees / Componenti

BT/ISO	Screw (ISO)	Screw (TC)	Ring	Wrench
	¹	²	³	
40/30	811-111008	811-111046	811-302032	816-202060
40/40	811-111005	811-111023	811-302036	816-202070
50/40	811-111005	811-111023	811-302036	816-202070
50/50	811-401052	811-401135	811-302047	816-202090

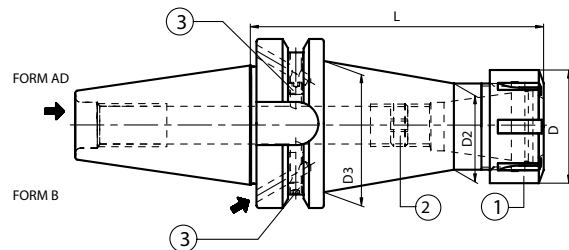
Schraubenschlüssel und Verschlußschraube für DIN69871/MAS BT/DIN2080 werden mitgeliefert
 Supplied with a wrench and a screw DIN69871/MAS BT/DIN2080
 Livré avec une clé et une vis de serrage DIN69871/MAS BT/DIN2080
 In dotazione chiave e vite per chiusura DIN69871/MAS BT/DIN2080

**SPANNZANGENFUTTER ER TYP
ER COLLET CHUCK
MANDRINS A PINCES TYPE ER
MANDRINI PORTAPINZA TIPO ER**

DIN 6499



	Code N.	Description	ISO	ER	D	L
STANDARD	*214-31511	BT30H55ER16	30	16	32	55
	*214-31512	BT30H55ER25	30	25	42	55
	*214-31525	BT30H60ER32	30	32	50	60
	214-31447	BT40H70ER16 AD+B	40	16	32	70
	214-31422	BT40H70ER25 AD+B	40	25	42	70
	214-31423	BT40H70ER32 AD+B	40	32	50	70
	214-31424	BT40H70ER40 AD+B	40	40	63	70
	214-31429	BT50H80ER25 AD+B	50	25	42	80
	214-31430	BT50H80ER32 AD+B	50	32	50	80
	214-31431	BT50H80ER40 AD+B	50	40	63	80

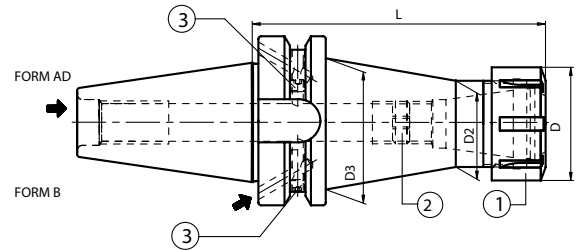


	Code N.	Description	ISO	ER	D	L	D2	D3
EXTENDED H100	*214-31520	BT30H100ER16	30	16	32	100	22	24
	*214-31538	BT30H100ER25	30	25	42	100	32	40
	214-31448	BT40H100ER16 AD+B	40	16	32	100	22	32
	214-31439	BT40H100ER25 AD+B	40	25	42	100	32	42
	214-31440	BT40H100ER32 AD+B	40	32	50	100	40	50
	214-31449	BT40H100ER40 AD+B	40	40	63	100	50	50
	214-31450	BT50H100ER16 AD+B	50	16	32	100	22	32
	214-31438	BT50H100ER25 AD+B	50	25	42	100	32	42
	214-31434	BT50H100ER32 AD+B	50	32	50	100	40	50
	214-31436	BT50H100ER40 AD+B	50	40	63	100	50	63

*Ausführung Form AD
*Execution form AD
*Forme AD
*Forma AD


SPANNZANGENFUTTER ER TYP - LANG
ER COLLET CHUCK - LONG
MANDRINS A PINCES TYPE ER - SERIE LONGUE
MANDRINI PORTAPINZA TIPO ER - SERIE LUNGA


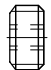
DIN 6499



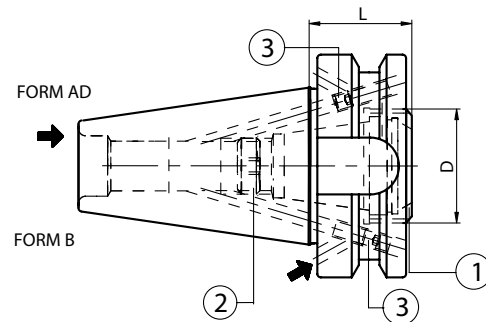
	Code N.	Description	ISO	ER	D	L	D2	D3	
EXTENDED	H 160	214-31442	BT40H160ER16 AD+B	40	16	32	160	22	32
		214-31432	BT40H160ER25 AD+B	40	25	42	160	32	42
		214-31433	BT40H160ER32 AD+B	40	32	50	160	40	50
		214-31451	BT40H160ER40 AD+B	40	40	63	160	50	50
		214-31452	BT50H160ER16 AD+B	50	16	32	160	22	32
		214-31453	BT50H160ER25 AD+B	50	25	42	160	32	42
		214-31435	BT50H160ER32 AD+B	50	32	50	160	40	50
	214-31437	BT50H160ER40 AD+B	50	40	63	160	50	63	
	H 200	214-31454	BT40H200ER16 AD+B	40	16	32	200	22	32
		214-31455	BT40H200ER25 AD+B	40	25	42	200	32	42
		214-31456	BT40H200ER32 AD+B	40	32	50	200	40	50
		214-31457	BT40H200ER40 AD+B	40	40	63	200	50	50
		214-31458	BT50H200ER16 AD+B	50	16	32	200	22	32
		214-31459	BT50H200ER25 AD+B	50	25	42	200	32	42
214-31460		BT50H200ER32 AD+B	50	32	50	200	40	50	
214-31461	BT50H200ER40 AD+B	50	40	63	200	50	63		

Ersatzteile / Spare parts / Pieces detachees / Componenti

Tape	Screw	Quantity
		
ISO 40	811-103009	2
ISO 50	811-103009	2

ER	Nut	Stop screw
		
16	812-203005	811-303119
25	812-203001	811-303121
32	812-203002	811-303118
40	812-203003	811-303122

SPANNZANGENFUTTER ER TYP EXTRAKURZ
ER COLLET CHUCK WITH INSIDE NUT
MANDRINS COURTS A PINCES TYPE ER
MANDRINI PORTAPINZA TIPO ER EXTRACORTI



Code N.	Description	ISO	ER	D	L
214-31462	BT40H29ER25A-AD+B	40	25A	32	29
214-31571	BT40H29ER32A	40	32A	40	29
214-31463	BT50H40ER32A-AD+B	50	32A	40	40

*Ausführung Form AD
 *Execution form AD
 *Forme AD
 *Forma AD

Ersatzteile / Spare parts / Pieces detachees / Componenti

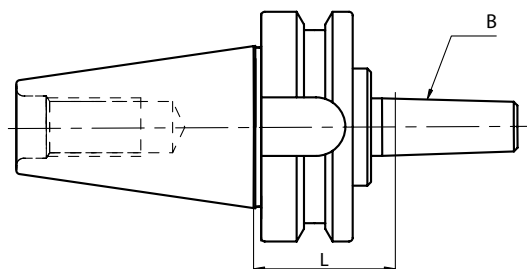
Tape	Screw	Quantity
ISO 40	811-103009	2
ISO 50	811-103009	2

ER	Nut	Stop screw
25A	812-203057	811-303121
32A	812-203032	811-303118

MAS 403/BT A

BOHRFUTTERAUFNAHMEN
ABORS FOR DRILL CHUCKS
ARBRES POUR MANDRINS DE PERCAGE
ATTACCO PER MANDRINI PORTAPUNTE

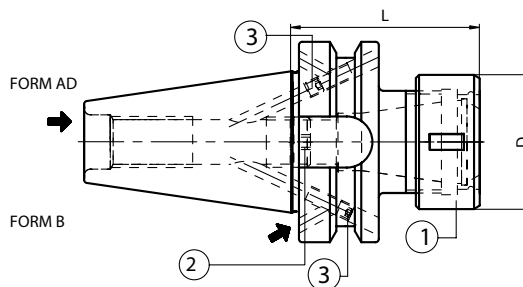
DIN 238



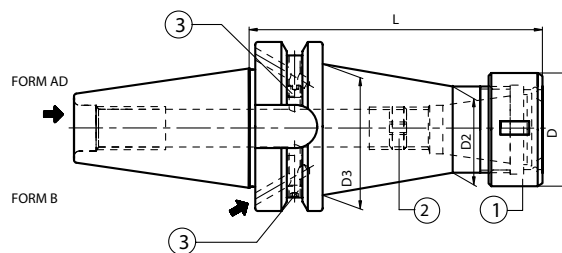
Code N.	Description	ISO	B	L
216-31510	BT30H40B12	30	12	40
216-31511	BT30H40B16	30	16	40
216-31502	BT40H40B16	40	16	40
216-31503	BT40H40B18	40	18	40
216-31505	BT50H50B16	50	16	50
216-31506	BT50H50B18	50	18	50

**SPANNZANGENFUTTER EOC TYP
EOC COLLET CHUCK
MANDRINS A PINCES TYPE EOC
MANDRINI PORTAPINZA TIPO EOC**

DIN 6388





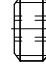
	Code N.	Description	ISO	D	L	D1
STANDARD	214-11401	BT40H70EOC16 AD+B	40	16	43	70
	214-11402	BT40H70EOC25 AD+B	40	25	60	70
	214-11403	BT50H85EOC25 AD+B	50	25	60	85
	214-11404	BT50H90EOC32 AD+B	50	32	72	90



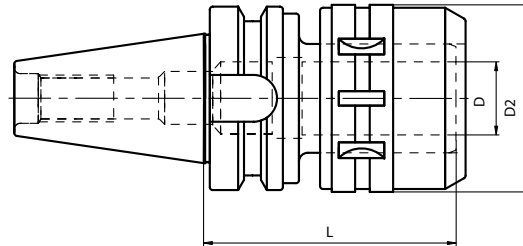
	Code N.	Description	ISO	EOC	D	L	D2	D3
EXTENDED	214-11405	BT40H130EOC16 AD+B	40	16	43	130	33	42
	214-11406	BT40H130EOC25 AD+B	40	25	60	130	48	48
	214-11408	BT50H130EOC25 AD+B	50	25	60	130	48	48
	214-11409	BT50H130EOC32 AD+B	50	32	72	130	60	60

Ersatzteile / Spare parts / Pieces detachees / Componenti

Tape	Screw	Quantity
		
ISO 40	811-103009	2
ISO 50	811-103009	2

EOC	Nut	Stop screw
		
16	812-202050	811-303121
25	812-202070	811-303123
32	812-202080	811-303123

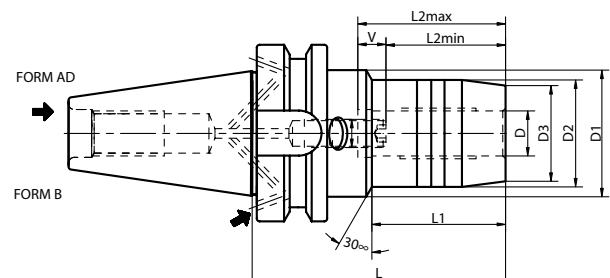
**KRAFTSPANNFUTTER
MILLING CHUCK
MANDRINS A FORT SERRAGE
MANDRINI A FORTE SERRAGGIO**



Code N.	Description	ISO	D	D2	L
214-01501	BT40H105C20	40	20	54	105
214-01502	BT40H105C32	40	32	72	105
214-01503	BT40H135C32	40	32	72	135
214-01504	BT50H105C20	50	20	54	105
214-01505	BT50H105C32	50	32	72	105
214-01506	BT50H135C32	50	32	72	135

MAS 403/BT AD/B

**HYDRO-DEHNSPANNFUTTER FÜR WERKZEUGE MIT ZYLINDERSCHAFT
HYDRO-EXPANSION CHUCKS FOR TOOLS WITH CYLINDRICAL SHANK
MANDRINS HYDRO-EXPANSIBLES POUR OUTIL A QUEUE CYLINDRIQUE
MANDRINI IDRAULICI PER UTENSILI ATTACCO CILINDRICO**

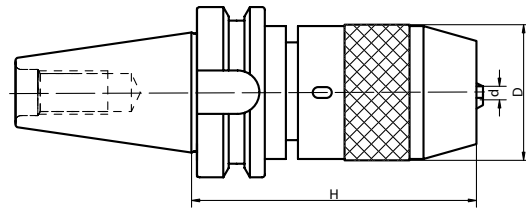


Code N.	Description	ISO	D	D1	D2	D3	L	L1	L2 min	L2 max	V	M
252-11405	BT40H90G06-WO AD+B	40	6	45	26	22	90	43	27.5	37.5	10	M5
252-11406	BT40H90G08-WO AD+B	40	8	45	28	24	90	44.5	27.5	37.5	10	M6
252-11407	BT40H90G10-WO AD+B	40	10	45	30	26	90	44.5	32.5	42.5	10	M8x1
252-11401	BT40H90G12-WO AD+B	40	12	45	32	28	90	44.5	37.5	47.5	10	M10x1
252-11408	BT40H90G16-WO AD+B	40	16	45	38	34	90	47.5	42.5	52.5	10	M10x1
252-11402	BT40H90G20-WO AD+B	40	20	45	42	38	90	47.5	42.5	52.5	10	M10x1
252-11409	BT40H83G32-WO AD+B	40	32	80	63	60	83	25.5	55	65	10	M10x1
252-11403	BT50H90G20-WO AD+B	50	20	45	42	38	90	47.5	42.5	52.5	10	M10x1
252-11404	BT50H90G32-WO AD+B	50	32	-	72	56	90	-	55	65	10	M16x1

Suitable only for clamping the tools with straight shank DIN 1835A.
Do not clamp end mills with shank whistle-notch (DIN 1835E).
Do not carry out clamping action without the tool.

Adatti solo per utensili con gambo cilindrico DIN 1835A.
Non bloccare le frese con attacco whistle-notch (DIN 1835E).
Evitare la chiusura del mandrino, senza l'utensile nel foro.

**NC-BOHRFUTTER
UNIVERSAL DRILL CHUCKS
MANDRINS UNIVERSELS DE PERCAGE
MANDRINI PORTAPUNTE INTEGRALI**



Code N.	Description	ISO	H	D	Clamping capacity	Wrench
252-11501	BT40H105R1-13	40	105	50	1-13	816-152001
252-11502	BT40H115R3-16	40	115	57	3-16	816-152002
252-11503	BT50H105R1-13	50	105	50	1-13	816-152001
252-11504	BT50H115R3-16	50	115	57	3-16	816-152002

RUNOUT ACCURACY 0.04 MM T.I.R.

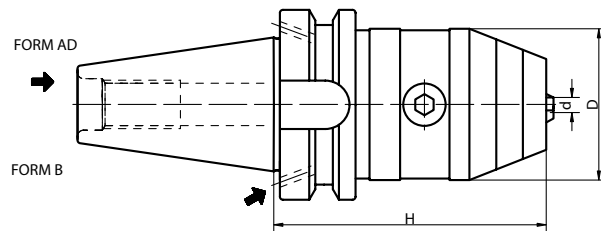
Supplied with spanner wrench to allow the application of supplementary gripping torque.
DO NOT USE IN REVOLUTION IN COUNTER-CLOCKWISE DIRECTION.

PRECISIONE DI ROTAZIONE 0.04 MM

Per incrementare la forza di serraggio i mandrini sono forniti con chiave di bloccaggio.
NON DEVONO ESSERE USATI PER LAVORAZIONI CON ROTAZIONE A SINISTRA.

MAS 403/BT AD/B

**NC-BOHRFUTTER FÜR RECHTS- UND LINKSLAUF
NC DRILL CHUCKS FOR LEFT AND RIGHT ROTATION
MANDRIN DE PERCAGE CNC POUR ROTATION GAUCHE-DROITE
MANDRINI PORTAPUNTE INTEGRALI PER ROTAZIONE DESTRA E SINISTRA**



Code N.	Description	ISO	H	D	Clamping capacity	Wrench
252-11410	BT40H90R1-13X-AD/B	40	90	50	1-13	816-111024
252-11411	BT40H95R3-16X-AD/B	40	95	57	3-16	816-111025
252-11412	BT50H90R1-13X-AD/B	50	90	50	1-13	816-111024
252-11413	BT50H95R3-16X-AD/B	50	95	57	3-16	816-111025

RUNOUT ACCURACY 0.03 MM T.I.R.

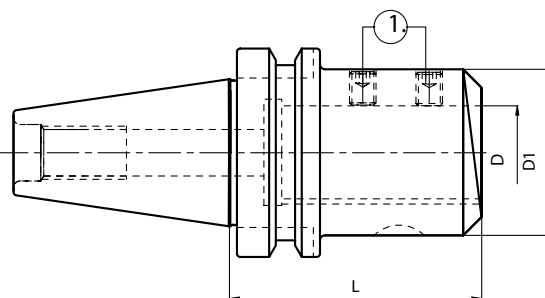
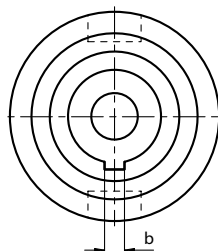
Suitable for right and left rotation up to 7000 rpm. ○ With fine balancing and extra price, they can run up to 15000rpm.

PRECISIONE DI ROTAZIONE 0.03 MM.

Adatti per rotazione sia destra che sinistra, con velocità max di 7000 g/min, o Velocità fino a 15000 g/min. sono ottenibili previa bilanciatura fine e con aumento di prezzo.

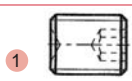
**STELLHÜSENSAUFNAHMEN
MASTER SHANKS FOR ADJUSTABLE ADAPTORS
MANDRINS POUR DOUILLES REGLAGE
MANDRINI PER ASTUCCI REGISTRABILI**

DIN 6327



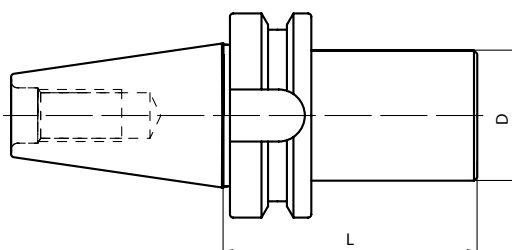
Code N.	Description	ISO	D	D1	L	b
211-11501	BT40H70D28TR	40	28	50	70	6
211-11502	BT40H120D36TR	40	36	63	120	8
211-11503	BT50H100D28TR	50	28	50	100	6
211-11504	BT50H100D36TR	50	36	63	100	8

Ersatzteile / Spare parts / Pieces detachees / Componenti

D	Screw
	
28	811-102027
36	811-102036

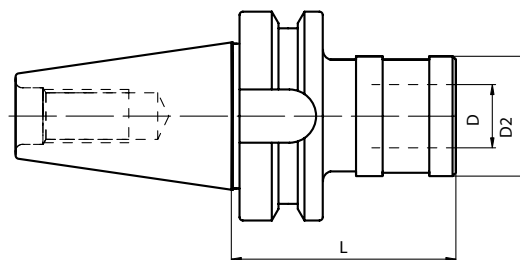
MAS 403/BT A

**ROHLINGE
BLANK TOOLHOLDER
EBAUCHE
MANDRINI SEMILAVORATI A STELO TENERO**



Code N.	Description	ISO	D	L
217-41502	BT40H160D40.5SM	40	40.5	160
217-41503	BT40H160D63.5SM	40	63.5	160
217-41504	BT40H250D63.5SM	40	63.5	250
217-41505	BT50H160D80SM	50	80	160
217-41506	BT50H200D80SM	50	80	200
217-41507	BT50H300D80SM	50	80	300

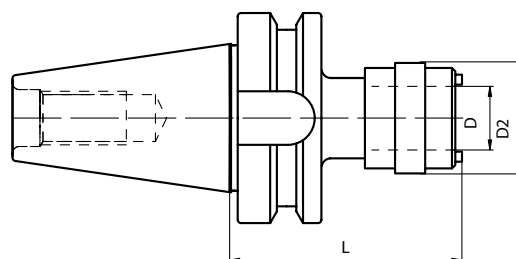
GEWINDESCHNEID-SCHNELLWECHSELFUTTER MIT LÄNGENAUSGLEICH
TENSION AND COMPRESSION TAPPING HEAD
MANDRINS DE TARAUDAGE A CHANGEMENT RAPIDE A DOUBLE USAGE
MASCHIATORI A DOPPIA COMPENSAZIONE



Code N.	Description	ISO	SIZE	Top range	PRESS.	EXT.	D	D2	L
M-3310	BT40H67GR1.DC	40	1	M3-M12	9	9	19	38	67
M-3410	BT40H93GR2.DC	40	2	M6-M20	15	15	31	53	93
M-3510	BT40H138GR3.DC	40	3	M14-M33	24	24	48	78	138
M-3320	BT50H81GR1.DC	50	1	M3-M12	9	9	19	38	80
M-3430	BT50H102GR2.DC	50	2	M6-M20	15	15	31	53	102
M-3530	BT50H135GR3.DC	50	3	M14-M33	24	24	48	78	135

MAS 403/BT A

GEWINDESCHNEID-SCHNELLWECHSELFUTTER OHNE LÄNGENAUSGLEICH
SOLID TAPPING HEAD
MANDRINS DE TARAUDAGE A CHANGEMENT RAPIDE SANS COMPENSATION
MASCHIATORI RIGIDI SENZA COMPENSAZIONE



Code N.	Description	ISO	SIZE	Top range	D	D2	L
M6010	BT40H67GR1.SC	40	1	M3-M12	19	33	67
M6020	BT40H90GR2.SC	40	2	M6-M20	31	50	90